



.....

GROWING OUR FUTURE,
TOGETHER ~ 2025



.....

DEERFIELD EXPANSION DETAILS
ASHEVILLE, NC

FLOORPLANS • NEXT STEPS

deerfieldwnc.org/expansion



DEERFIELD'S EXPANSION will enhance the beautifully landscaped campus and the strong design character that have made it a destination location with mountain vistas and easy access to hiking trails, the Blue Ridge Parkway, and western North Carolina's vibrant arts and culinary scene. The south side of campus will feature additional independent living offerings and optimize the existing campus hub by expanding and renovating the Health Center, Haden Hall, and Community Center. It will also flow into Deerfield's overall campus masterplan. Designated woodlands will be preserved and a new trail network woven in.

The New Apartment Building will be a four-level structure over a Terrace level with underground parking (one space per residence). Residences on the Terrace level feature walk-out for access to the campus paths. The exterior design will complement the existing independent living apartment buildings. The new building will connect to the existing campus via an enclosed corridor that residents may use daily and during the colder months and inclement weather.

Six smaller independent living hybrid buildings called **Canterbury Homes** will consist of four levels of residences (16 total), each with its own garage. These residences will offer views of the woodlands with walk-out provided at the first level.

The Health Center Expansion & Renovation will include a short-stay, hospitality-style rehabilitation space as well as a new memory care neighborhood.

The Haden Hall Expansion & Renovation will include a new clinic, physical therapy suite, meeting spaces, center for wellbeing, café, salon/spa, fitness center/studios (3), art studios (4), additional assisted living, and "roof-top" dining.

The Community Center Expansion & Renovation includes a new Blue Ridge multi-purpose space, a new library, and dining choices to include a coffee shop, fast-casual eatery, grab-n-go market, and destination bar and restaurant with casual, formal and private dining rooms.

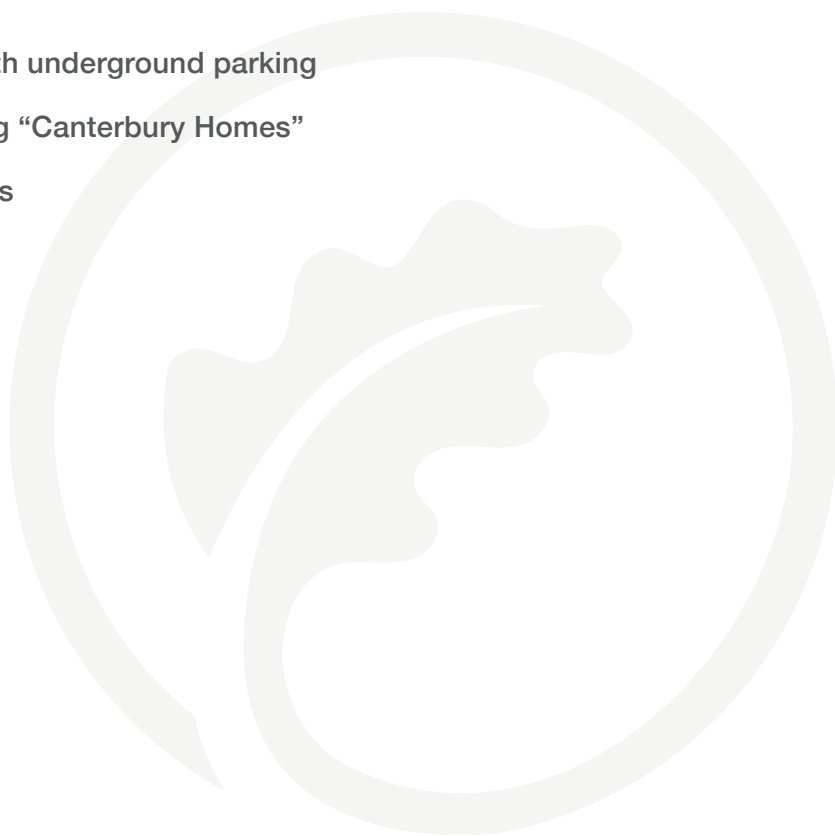
The Deerfield Master Campus Plan provides for additional Canterbury Homes as needed until the site is fully developed, as well as a new wing for Haden Hall that will meet future demands for assisted living and healthcare.



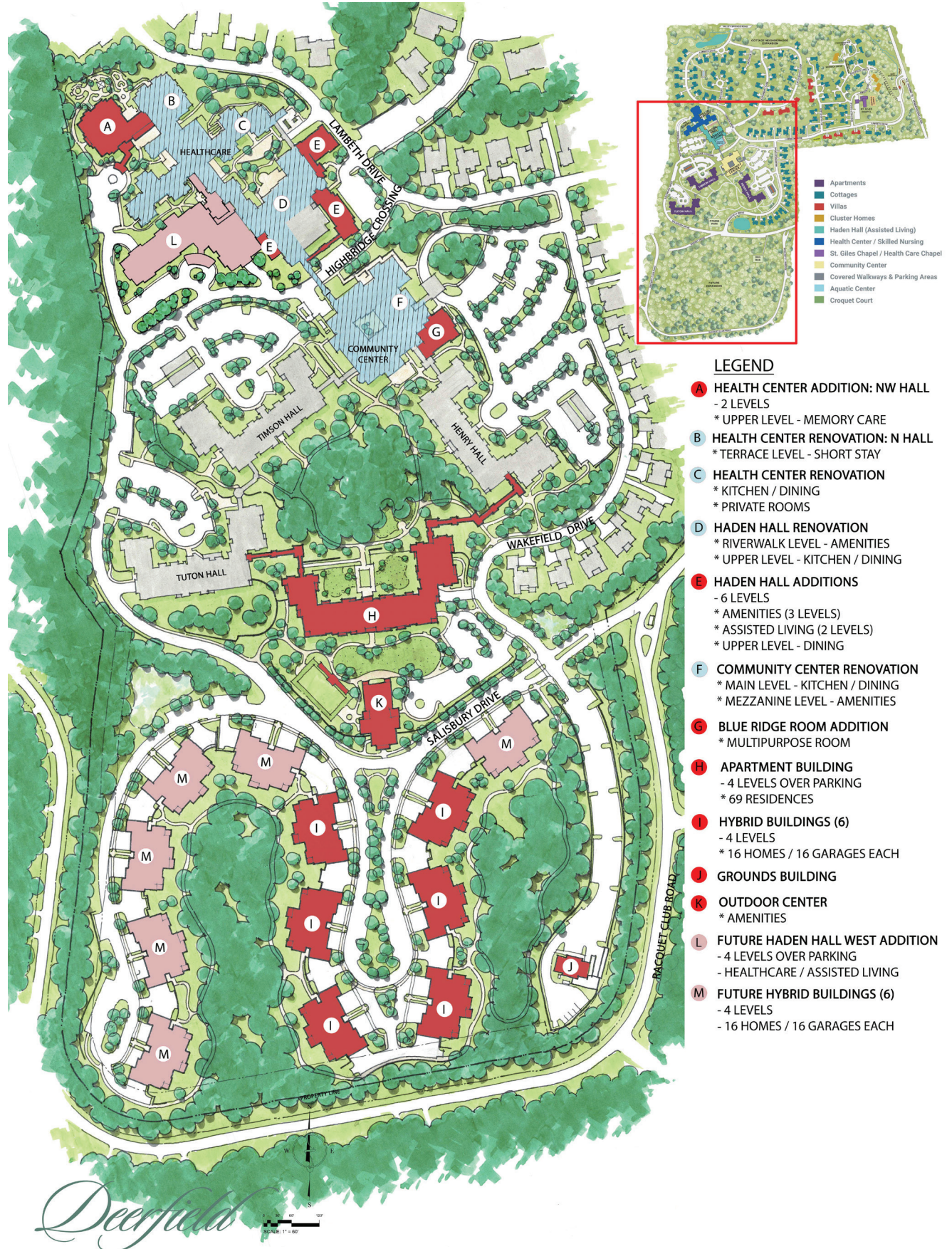
NOW IS YOUR OPPORTUNITY TO FIND YOUR PLACE IN OUR VIBRANT, THRIVING COMMUNITY.

DEERFIELD IS UNDERTAKING A MAJOR EXPANSION THAT WILL INCLUDE:

- ♦ 69-residence apartment building with underground parking
- ♦ Six 16-unit hybrid independent living “Canterbury Homes”
- ♦ Outdoor Center & Outdoor Amenities
- ♦ Community Center
- ♦ Haden Hall
- ♦ Health Center



CAMPUS SITE-PLAN



This plan is subject to change. The location and existence of amenities and other components of the development plan shown here are merely conceptual, and thus the plan may not accurately reflect the future development.



.....

APARTMENT FLOOR PLANS

69-RESIDENCE APARTMENT BUILDING
WITH UNDERGROUND PARKING

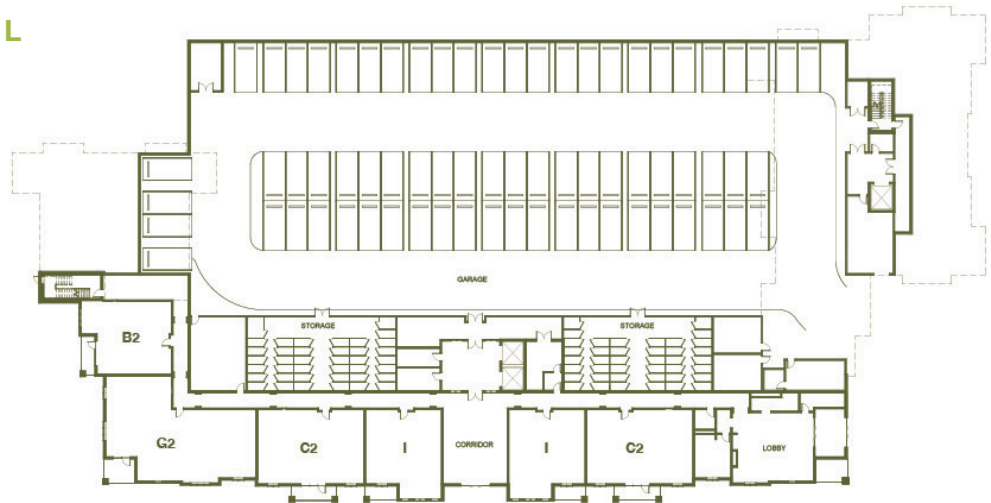


.....

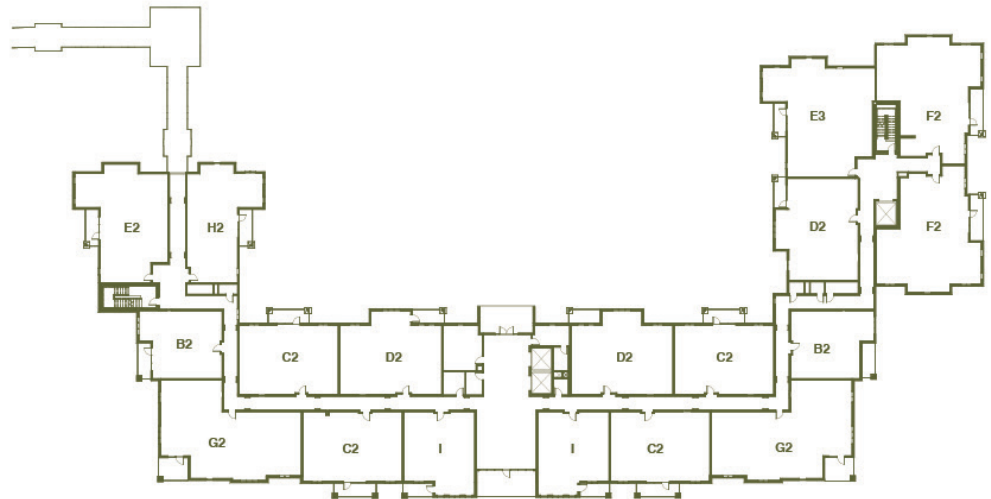
CHOOSE FROM A VARIETY OF NEW RESIDENCES
AND FLOOR PLANS TO FIND THE PERFECT HOME
TO SUIT YOUR LIFESTYLE.

APARTMENT FLOOR LEVELS

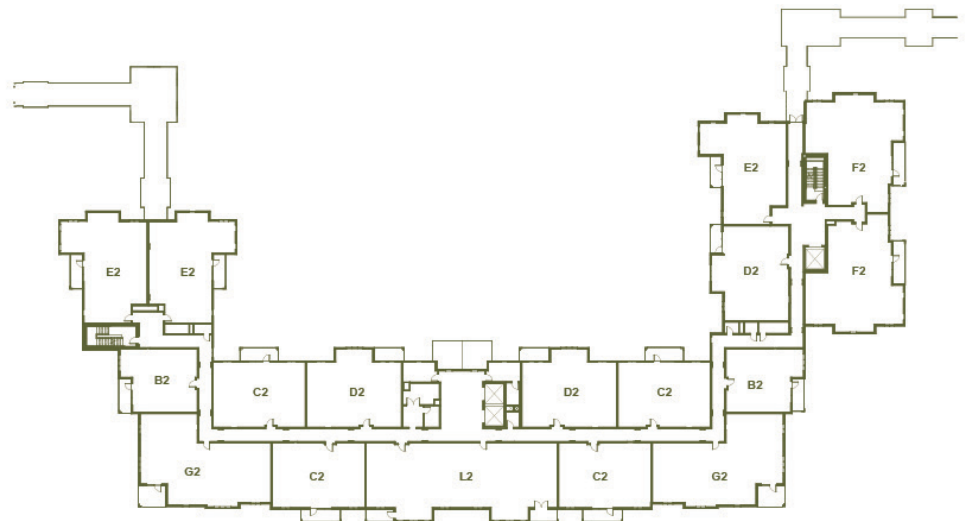
TERRACE LEVEL



FIRST LEVEL



SECOND LEVEL



THIRD LEVEL



FOURTH LEVEL

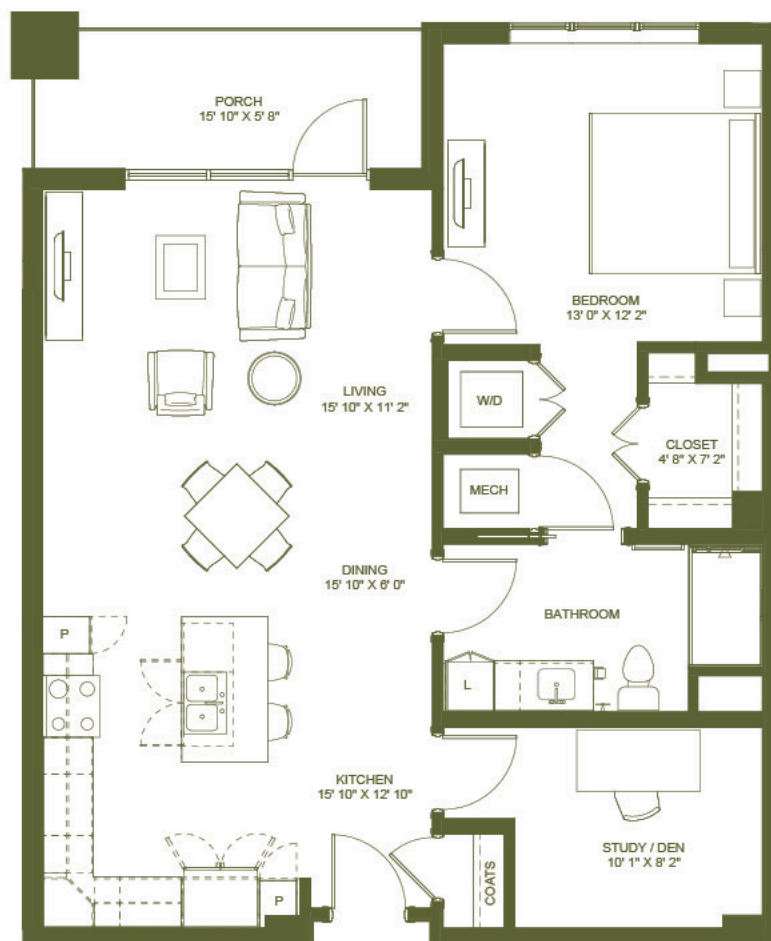




APARTMENT UNIT B2

.....

1 BEDROOM/1 BATHROOM WITH DEN • 1,021 SQ. FT.



Deerfield

A HOLISTIC APPROACH TO
A JOY-FILLED RETIREMENT

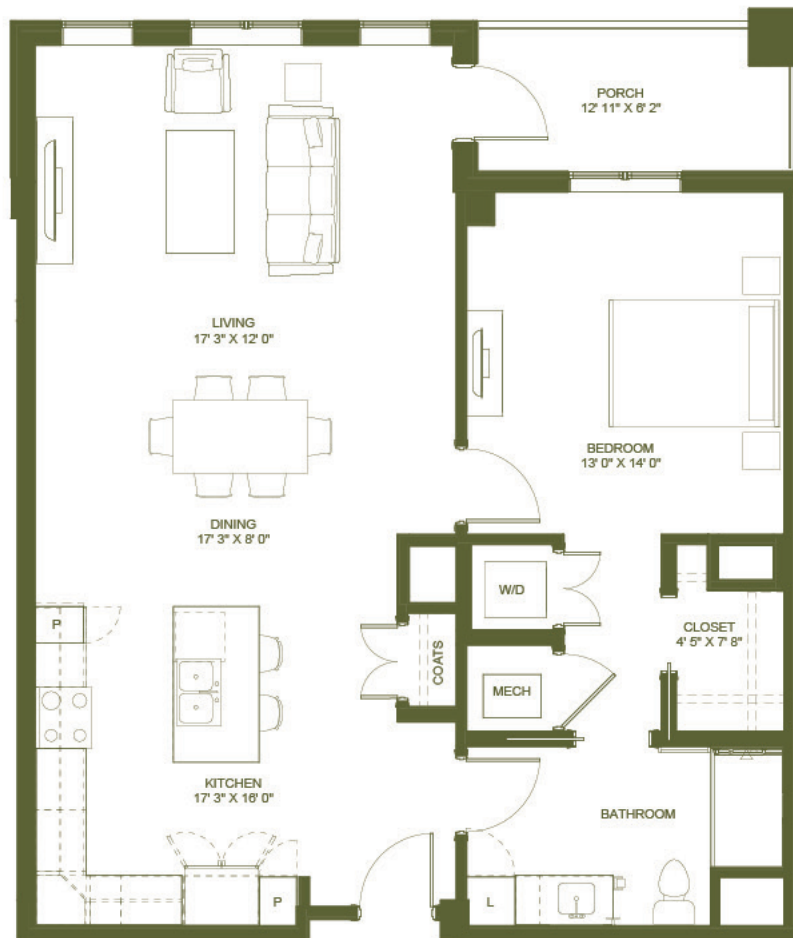
*This plan is subject to change, and layouts are approximate. Final designs may vary.



APARTMENT UNIT I

.....

1 BEDROOM/1 BATHROOM • 1,076 SQ. FT.



Deerfield

A HOLISTIC APPROACH TO
A JOY-FILLED RETIREMENT

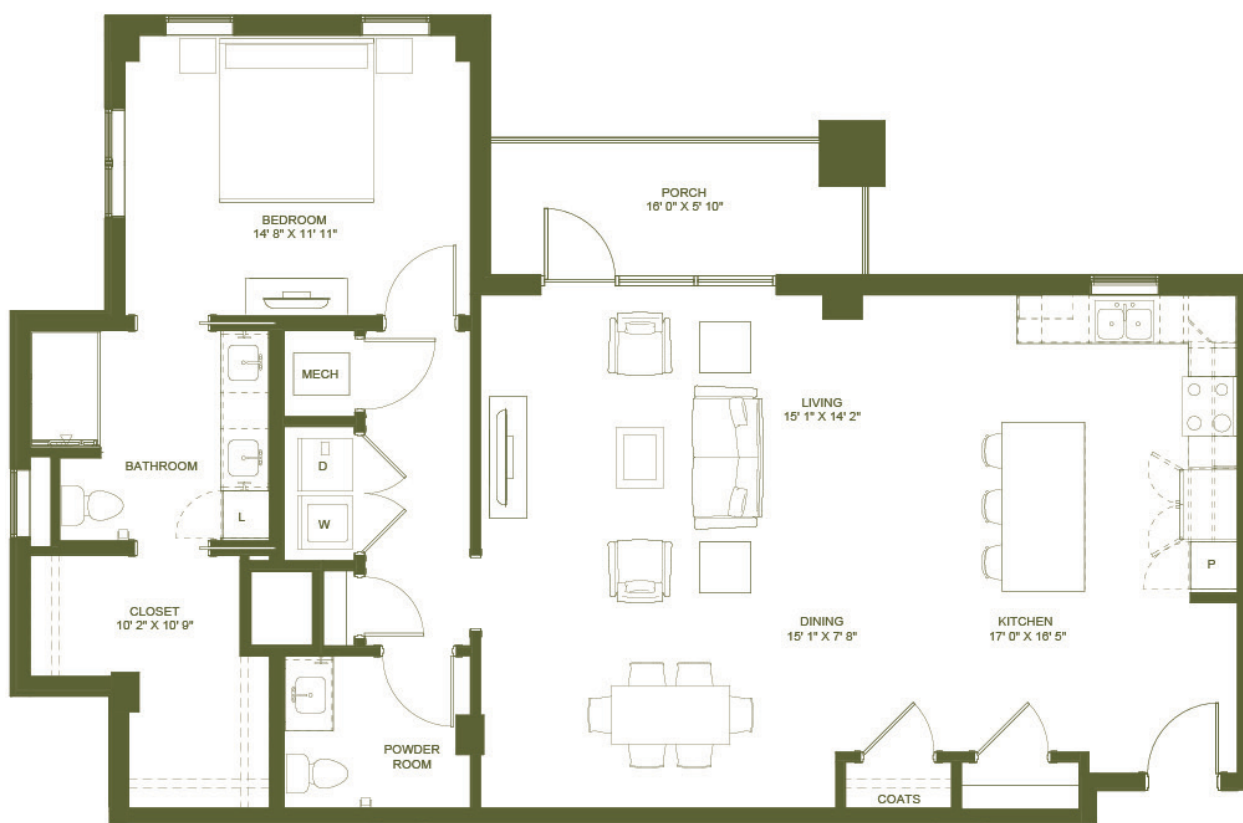
*This plan is subject to change, and layouts are approximate. Final designs may vary.



APARTMENT UNIT H2

.....

1 BEDROOM/1.5 BATHROOM • 1,280 SQ. FT.



Deerfield

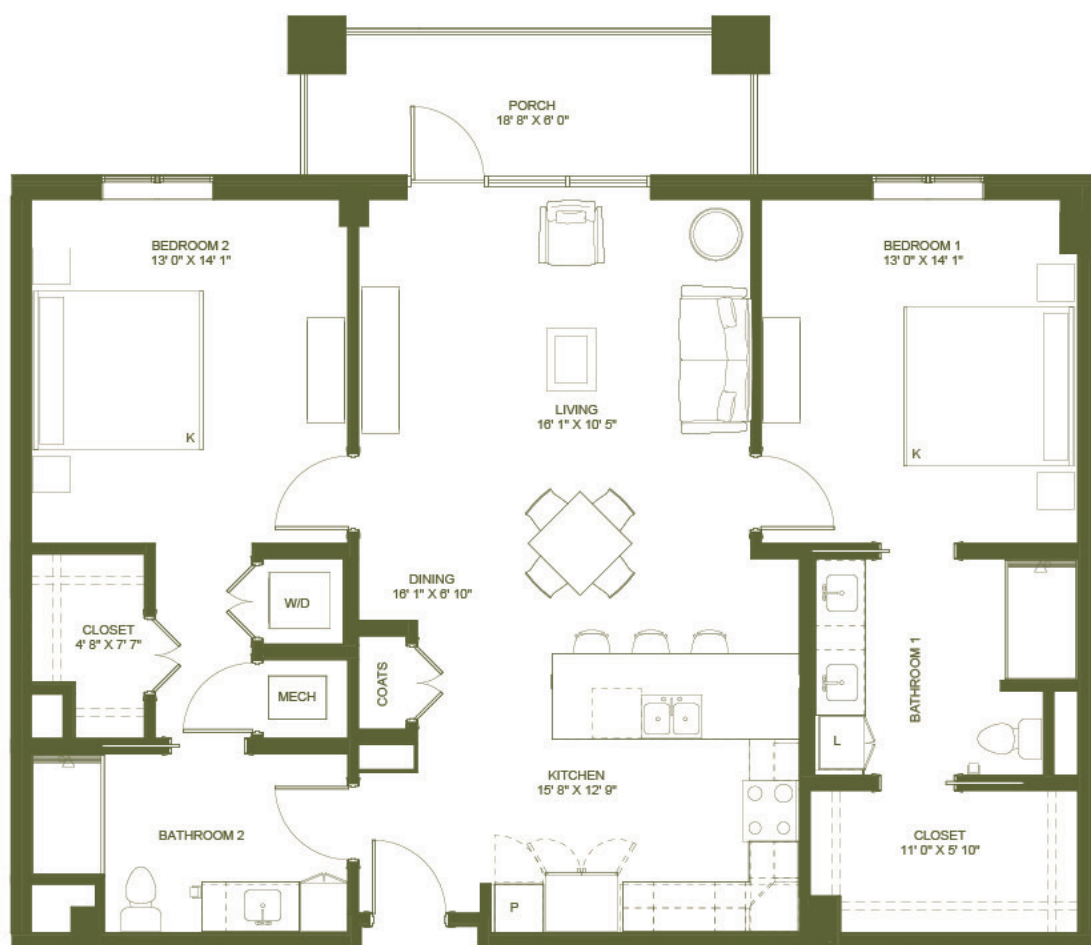
A HOLISTIC APPROACH TO
A JOY-FILLED RETIREMENT

*This plan is subject to change, and layouts are approximate. Final designs may vary.



APARTMENT UNIT C2

2 BEDROOMS/2 BATHROOMS • 1,347 SQ. FT.



Deerfield

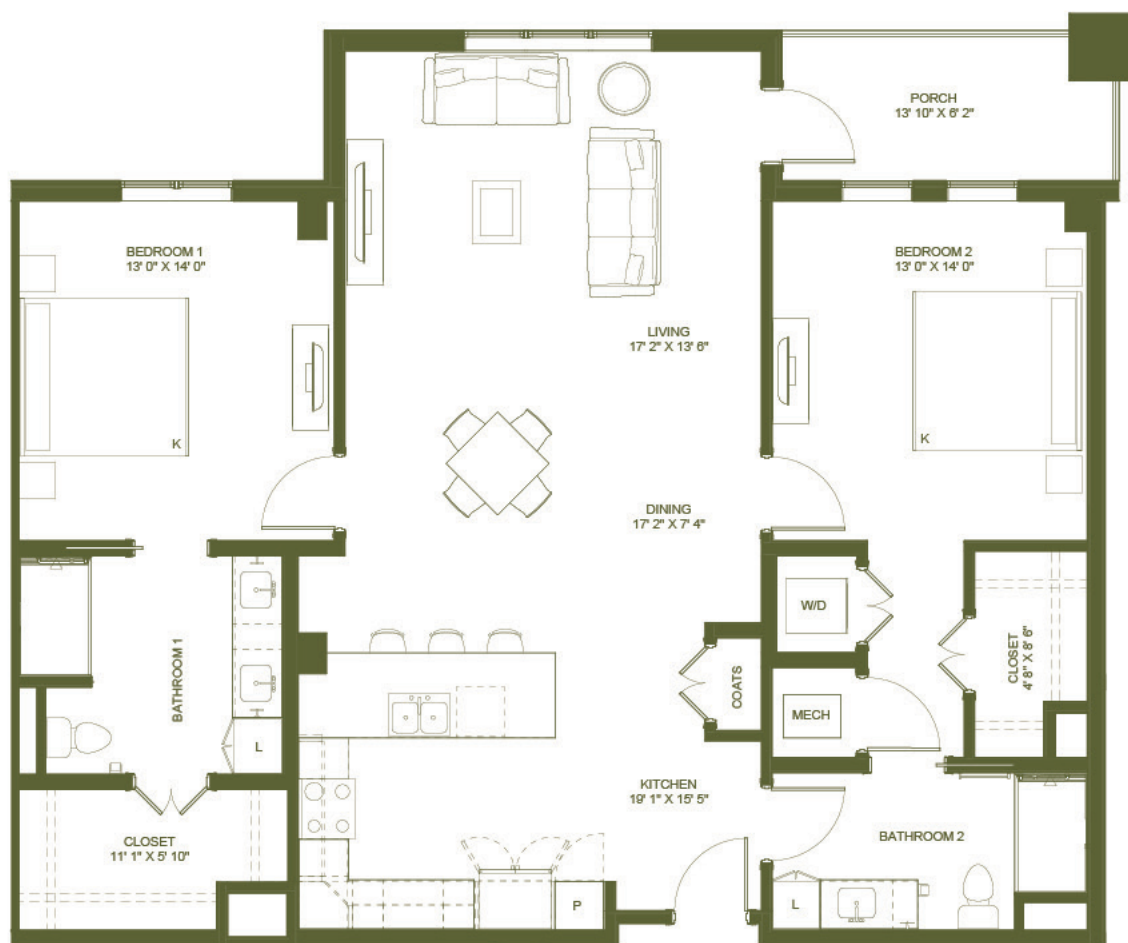
A HOLISTIC APPROACH TO
A JOY-FILLED RETIREMENT

*This plan is subject to change, and layouts are approximate. Final designs may vary.



APARTMENT UNIT D2

2 BEDROOMS/2 BATHROOMS • 1,488 SQ. FT.



Deerfield

A HOLISTIC APPROACH TO
A JOY-FILLED RETIREMENT

*This plan is subject to change, and layouts are approximate. Final designs may vary.



APARTMENT UNIT E2

2 BEDROOMS/2 BATHROOMS WITH DEN • 1,633 SQ. FT.



Deerfield

A HOLISTIC APPROACH TO
A JOY-FILLED RETIREMENT

*This plan is subject to change, and layouts are approximate. Final designs may vary.



APARTMENT UNIT F2

2 BEDROOMS/2.5 BATHROOMS WITH DEN • 1,924 SQ. FT.



Deerfield

A HOLISTIC APPROACH TO
A JOY-FILLED RETIREMENT

*This plan is subject to change, and layouts are approximate. Final designs may vary.



APARTMENT UNIT E3

2 BEDROOMS/2 BATHROOMS WITH DEN • 1,994 SQ. FT.



Deerfield

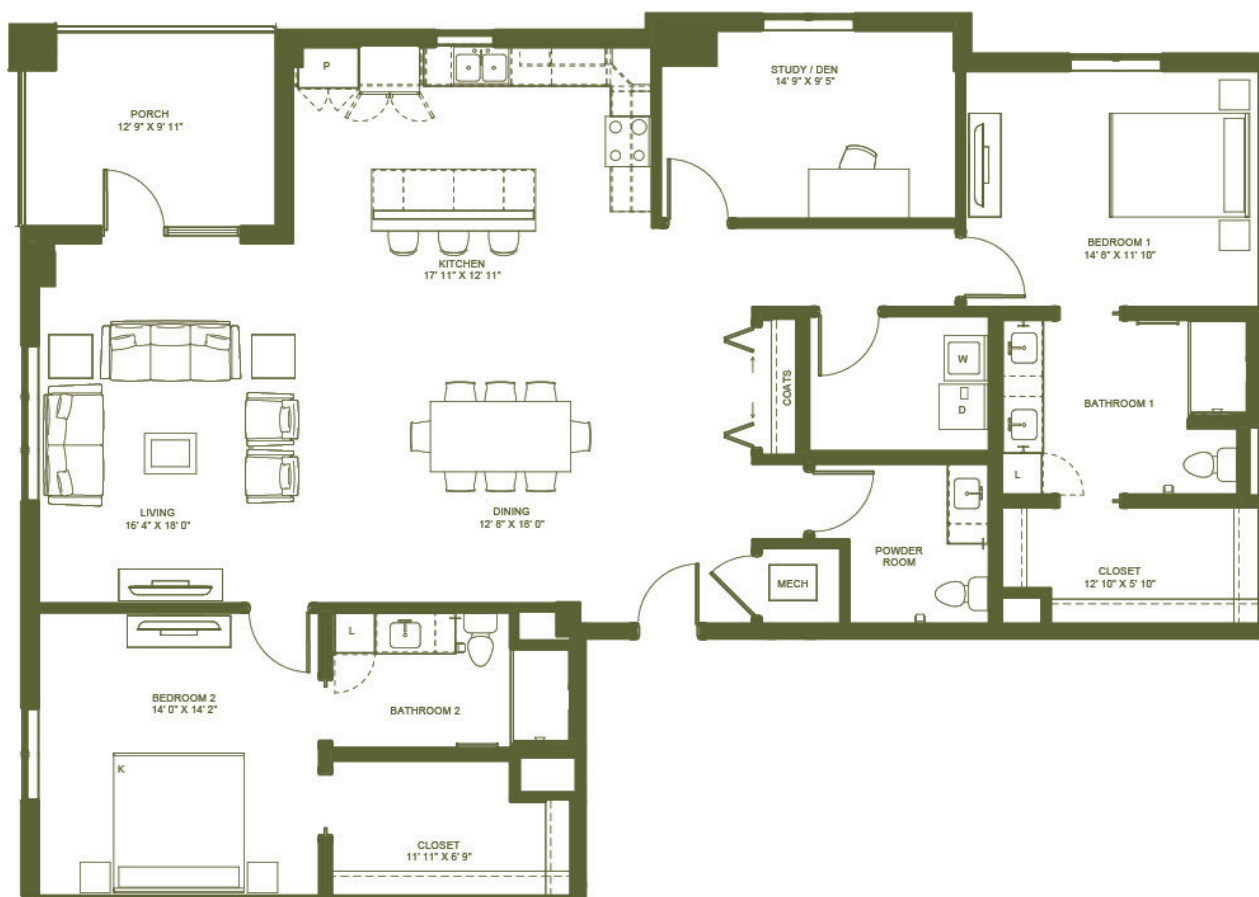
A HOLISTIC APPROACH TO
A JOY-FILLED RETIREMENT

*This plan is subject to change, and layouts are approximate. Final designs may vary.



APARTMENT UNIT G2

2 BEDROOMS/2.5 BATHROOMS WITH DEN • 2,088 SQ. FT.



Deerfield

A HOLISTIC APPROACH TO
A JOY-FILLED RETIREMENT

*This plan is subject to change, and layouts are approximate. Final designs may vary.



APARTMENT UNIT L2

.....

3 BEDROOMS/3 BATHROOMS WITH DEN • 2,976 SQ. FT.



Deerfield

A HOLISTIC APPROACH TO
A JOY-FILLED RETIREMENT

*This plan is subject to change, and layouts are approximate. Final designs may vary.



NORTHWEST HALL



BLUE RIDGE



.....

CANTERBURY HOME (HYBRID) FLOOR PLANS

16-UNIT HYBRID BUILDING WITH GARAGE PARKING



.....

WITH A VARIETY OF SPACIOUS RESIDENCES
TO CHOOSE FROM, YOU'LL FIND THE PERFECT
HOME TO SUIT YOUR LIFESTYLE.

CANTERBURY HOME FLOOR LEVELS

TERRACE LEVEL



FIRST LEVEL



.....

SECOND LEVEL



.....

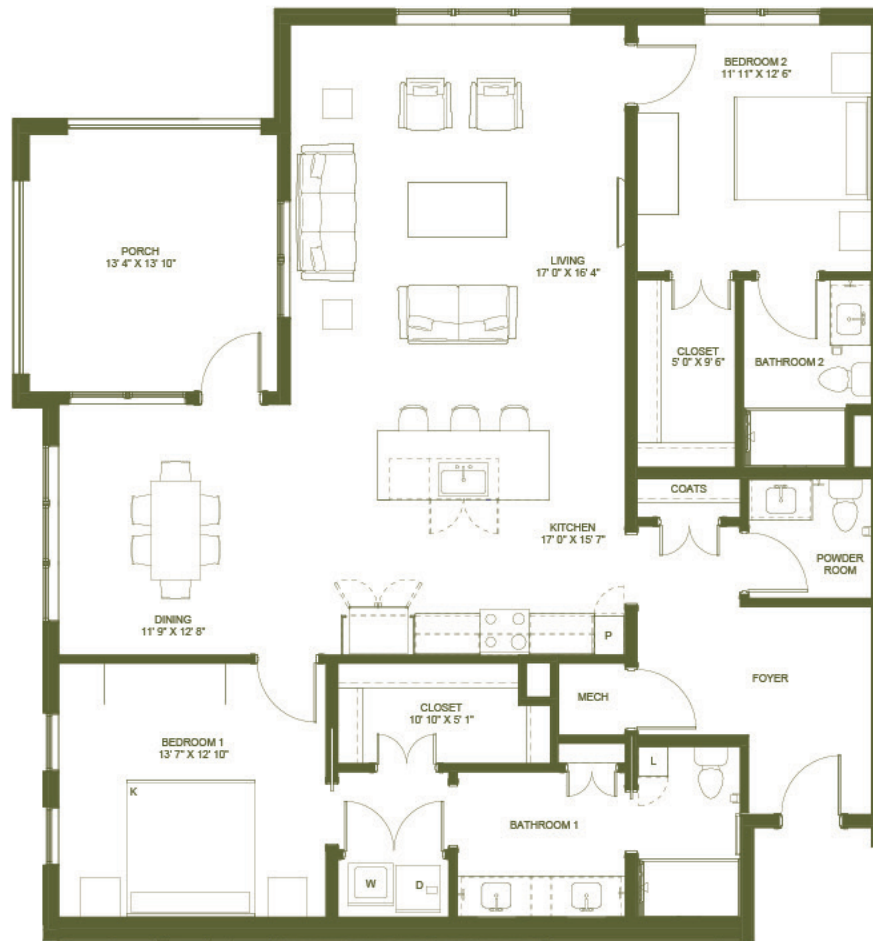
THIRD LEVEL





CANTERBURY HOME A

2 BEDROOMS/2.5 BATHROOMS • 1,700 SQ. FT.



Deerfield

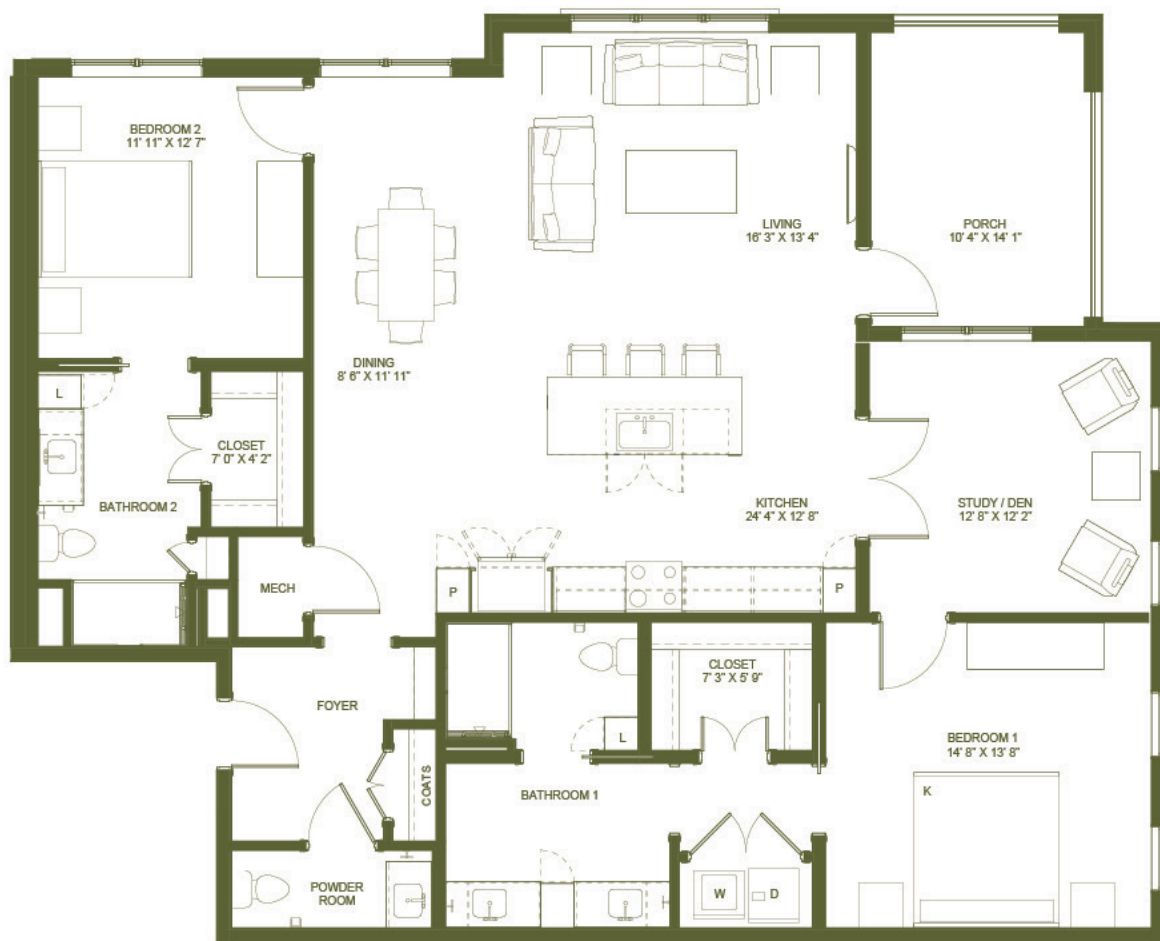
A HOLISTIC APPROACH TO
A JOY-FILLED RETIREMENT

* This plan is subject to change, and layouts are approximate. Final designs may vary.



CANTERBURY HOME C

2 BEDROOMS/2.5 BATHROOMS WITH DEN • 1,765 SQ. FT.



Deerfield

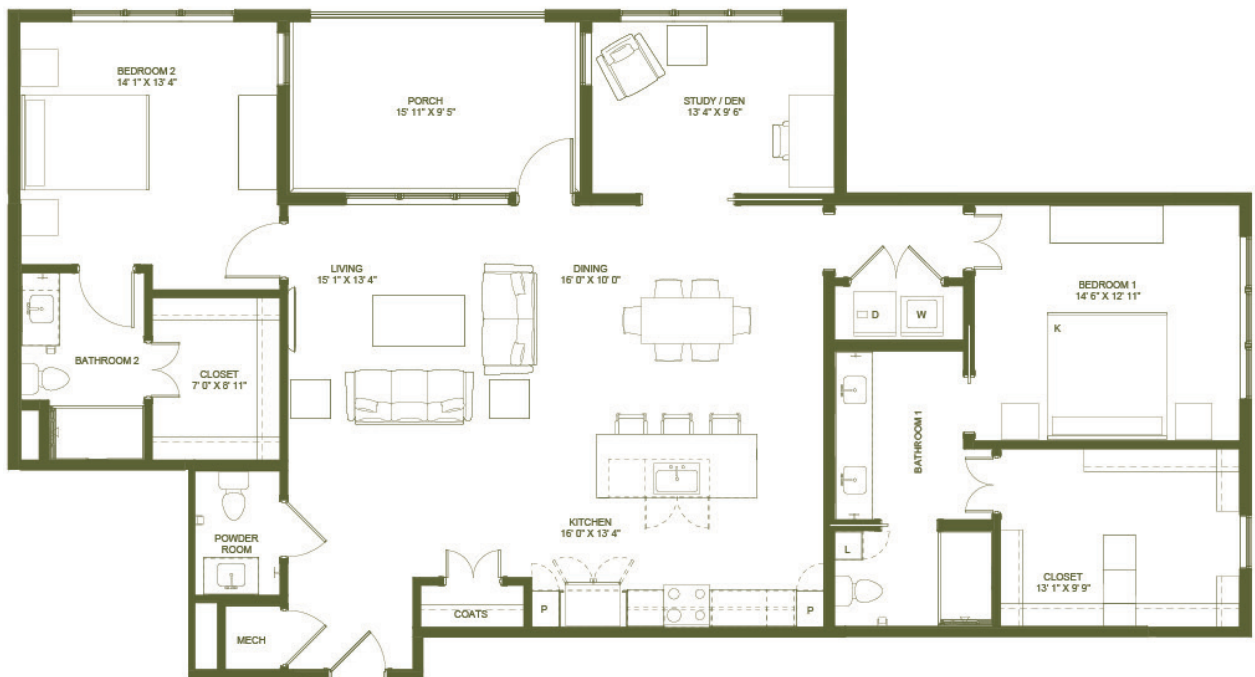
A HOLISTIC APPROACH TO
A JOY-FILLED RETIREMENT

*This plan is subject to change, and layouts are approximate. Final designs may vary.



CANTERBURY HOME E

2 BEDROOMS/2.5 BATHROOMS WITH DEN • 1,864 SQ. FT.



Deerfield

A HOLISTIC APPROACH TO
A JOY-FILLED RETIREMENT

*This plan is subject to change, and layouts are approximate. Final designs may vary.



CANTERBURY HOME A2

2 BEDROOMS/2.5 BATHROOMS WITH DEN • 1,872 SQ. FT.



Deerfield

A HOLISTIC APPROACH TO
A JOY-FILLED RETIREMENT

*This plan is subject to change, and layouts are approximate. Final designs may vary.



CANTERBURY HOME B

2 BEDROOMS/2.5 BATHROOMS WITH DEN • 1,998 SQ. FT.



Deerfield

A HOLISTIC APPROACH TO
A JOY-FILLED RETIREMENT

* This plan is subject to change, and layouts are approximate. Final designs may vary.



CANTERBURY HOME D

2 BEDROOMS/2.5 BATHROOMS WITH DEN • 2,094 SQ. FT.



Deerfield

A HOLISTIC APPROACH TO
A JOY-FILLED RETIREMENT

*This plan is subject to change, and layouts are approximate. Final designs may vary.



1617 HENDERSONVILLE ROAD
ASHEVILLE, NC 28803
800-284-1531
deerfieldwnc.org/expansion

