



# GROW YOUR IMPACT

2024 REPORT



*Deerfield*  
CHARITABLE  
FOUNDATION



# CONTENTS

- |   |   |    |   |
|---|---|----|---|
| 1 | A MESSAGE FROM<br>MICHELLE WOOLEY   | 10 | CARE IN THE MIDST OF CRISIS:<br>SHIRLEY BURNETTE EMPLOYEE<br>SUPPORT FUND |
| 2 | A MESSAGE FROM<br>CHRIS DISMUKES  | 11 | HONORING SERVICE,<br>STRENGTHENING COMMUNITY                              |
| 3 | 2024 BOARD OF DIRECTORS   | 12 | VOLUNTEER ENGAGEMENT:<br>GROWING TOGETHER<br>THROUGH SERVICE              |
| 4 | STRATEGIC PARTNERSHIPS:<br>DATA DRIVEN GENEROSITY<br>MISSION ADVANCEMENT FUND | 13 | LEGACY SOCIETY:<br>HONORING OUR HISTORY,<br>INVESTING IN OUR FUTURE       |
| 6 | STRATEGIC PARTNERSHIPS:<br>DEERFIELD CARES FUND                               | 14 | DEERFIELD CHARITABLE<br>FOUNDATION FUNDS                                  |
| 7 | DELIVERING MORE THAN JUST<br>FOOD: MEALS ON WHEELS                            | 16 | 2024 GIVING REPORT  |
| 8 | PRIORITIZING LIFESTYLE AND<br>WELL-BEING: HEALTH CARE FUND                    |    |   |
| 9 | INVESTING IN OUR TEAM:<br>DANNY BOONE EMPLOYEE<br>SCHOLARSHIP FUND            |    |   |

## A MESSAGE FROM MICHELLE WOOLEY EXECUTIVE DIRECTOR



**Thank you! As we reflect on a year like no other, your generosity provided so much for so many.**

2024 was a year of unexpected gifts and unprecedented loss. It was a year that highlighted the compassion and strength of the Deerfield community as we worked together to respond to the overwhelming needs of friends and neighbors after Hurricane Helene upended life as we knew it.

The ten months leading up to the “storm of the century” were full of **milestones** and **successes**.

- **Creating an annual philanthropy plan gave us structure.**
- **Initiating a Community Engagement Needs Assessment offered clear direction.**
- **Shifting to a more mission-aligned outreach effort meant greater support for local seniors.**
- **Funding education, technology, and innovation related to the slippery slope of cognitive decline enhanced our dementia-friendly culture.**
- **Presenting at multiple conferences enriched our relationships and expanded our reach.**

Having partners in this work has proven so incredibly beneficial. In 2024 we began a Foundation Advisory Group. These Deerfield residents have offered feedback and support for presentations, print projects, and annual campaign materials. **Their investment in our work is invaluable.** Additionally, I’m thrilled to welcome FaithAnne Bieschke as Philanthropy Coordinator, a newly created role. With military experience and a background in nonprofit work, her contributions are exceptional!

And then there’s you! In the following pages, we will reflect on all we have done together. Your gifts of **time**, **talent**, and **treasure** made a difference in the lives of many. I am so excited to share with you the impact of your compassion in action!

**With hope and gratitude,**

**Michelle Wooley**, *Executive Director* – Deerfield Charitable Foundation





A MESSAGE FROM

# CHRIS DISMUKES

CHAIRPERSON



**2024 was a year that brought clarity to our work as a board. With program priorities in place and a newly created annual philanthropy plan as our guide we were able to move forward with confidence and purpose. And the progress we've made together is astounding!**

The foundation-initiated and funded Community Engagement Needs Assessment clarified the greatest barriers to healthy aging in our region. Although none of the data was surprising, it allowed us to **evaluate our strategic partnerships**, using information gained through surveys completed by the best and brightest in the local field of aging services.

Libby Bush and Michelle Wooley teamed up with Asheville Area Habitat for Humanity's CEO, Andy Barnett and Deerfield resident, Habitat volunteer, and Foundation Board Member, Tim Kurtz to take our Deerfield Habitat partnership model to LeadingAge conferences in Virginia, North Carolina, and the national conference in Tennessee. They shared our story with hope that other Life Plan Community leaders might consider partnering with local nonprofit organizations to **provide safe, affordable aging-in-place housing** to older adults in *their* regions.

Growing our board and looking for opportunities to directly benefit and support the Deerfield Community have been priorities this year. And in September, we were pleased to welcome new board member, Karen Wallace-Meigs. With years of development work, her fundraising leadership came at exactly the right time. And of direct benefit to Deerfield: Foundation funding for the I AM Project, Sound Blanket technology, "Living Next Door to Dementia" speaker series for residents, educational scholarships for employees, and post-hurricane relief were some of the highlights you will read about in this report.

**I am so excited to be part of this forward motion in 2025!**

With high hopes,

**Chris Dismukes**, Chairperson – Deerfield Charitable Foundation Board of Directors

## DEERFIELD CHARITABLE FOUNDATION

### 2024 BOARD OF DIRECTORS



CHRIS DISMUKES  
CHAIRPERSON



GENE CARR  
VICE CHAIR



GLENN MAYES  
TREASURER



JOANNE  
BRANNON



TIM KURTZ



ANDY STRAUSS



KAREN  
WALLACE-MEIGS



LIBBY BUSH  
PRESIDENT AND CEO  
EX-OFFICIO



ROBERT CHANDLER  
CFO  
EX-OFFICIO



MICHELLE WOOLEY  
ASSISTANT SECRETARY  
EX-OFFICIO



# Strategic Partnerships: Data Driven Generosity

## Mission Advancement Fund .....

### Understanding Community Needs Through CENA ≡

In 2024, **Deerfield Charitable Foundation** conducted a **Community Engagement Needs Assessment (CENA)** to identify the most pressing challenges facing older adults in Buncombe County. This comprehensive study, conducted in partnership with **Holleran Consulting**, gathered insights through surveys, secondary data, and stakeholder insights.

**Key topics included:**

- Aging in place
- Affordable housing
- Caregiver support
- Social isolation
- Healthcare access

### From Insights to Action ≡

The findings, presented in March to the Deerfield community and in May to key stakeholders at the **Buncombe County Age-Friendly Summit** are now a guiding force in our work. Every initiative we support is measured against a key question: **Does this address barriers to healthy aging in our region?**

**CENA findings help us:**

- Direct resources to the most urgent needs
- Strengthen partnerships with local organizations
- Develop impactful programs that foster dignity and independence



In 2024 gifts to the **Mission Advancement Fund** allowed us to address the areas of greatest need identified by the CENA.

SUPPORTING OUR STRATEGIC PARTNERS	
Aging in Place and Age-Friendly Community	\$248,375
Affordable Housing and Income	\$125,000
Navigation of Services and Access to Care	\$283,000
Chronic Disease Management and Prevention	\$110,000
TOTAL:	\$766,375

In 2024 Libby Bush, Tim Kurtz, Michelle Wooley and Andy Barnett traveled to **Leading Age** state conferences in Virginia and North Carolina, as well as the national meeting in Nashville, TN to share how **Deerfield and Habitat for Humanity** have partnered to address key findings #1 and #2 through our collaborative work creating the **Aging-In-Place Homeowner Program**. We have provided **12 affordable homes for seniors** in Buncombe County, with many more on the horizon. We hope that sharing this model with colleagues from across the country will inspire others to do the same.



### Key Findings & Partnerships Making a Difference ≡

- 1
- Aging in Place and Age-Friendly Community**  
Many families juggle full-time jobs while caring for aging parents, particularly those experiencing memory loss. **MountainCare**, a nonprofit providing adult day services, offers vital support. Deerfield Charitable Foundation proudly funds its current programs and future planning.
- 2
- Affordable Housing and Income**  
More than **half of older renters in Buncombe County** spend over **30% of their income on housing**. Our partnership with **Asheville Area Habitat for Humanity** has helped sponsor **12 aging-in-place homes**, creating safe, **intergenerational living spaces** for seniors.
- 3
- Navigation of Services and Access to Care**  
Finding appropriate care can be overwhelming. With our Foundation's help, **Jewish Family Services** is launching a **senior care management program**, providing **counseling, care navigation, and ongoing support** for older adults and their families.
- 4
- Chronic Disease Management and Prevention**  
Cognitive decline can feel isolating, but **timely intervention makes a difference**. Our funding supports **MemoryCare**, a nationally recognized dementia care program, ensuring that **more families have access to expert support and chronic disease management**.

With **your support**, we are building a **stronger, more compassionate community** where older adults can thrive.



# Strategic Partnerships: Deerfield Cares Fund .....

## The Good You Do in the World ≡

The **Deerfield Cares Fund** is a powerful reflection of the generosity and compassion of our donors. This fund is dedicated to **outreach programs benefiting local seniors**, ensuring that critical needs are met each year. In **September 2024**, with **\$50,000 in funding**, we were able to support the following initiatives:

- **\$10,000** for **Meals on Wheels**, providing new thermal containers and funding **3,093 meals** for seniors unable to contribute to meal costs.
- **\$15,000** for **MountainCare Adult Day Services**, covering **350 rides** for participants and easing the burden on caregivers.
- **\$10,000** to **Habitat for Humanity**, funding a home repair project for an older adult in Buncombe County.
- **\$15,000** to **MemoryCare**, publishing the first edition of a book by **dementia expert Mary Donnelly**, compiling valuable caregiver resources. Copies are available in the **Deerfield Library** for residents, board members, and staff.



## And Then, You Gave Even More ≡

After the **2024 Deerfield Cares Fund** was fully allocated, donors stepped up once again—this time to support **Habitat for Humanity** after their **ReStore** and **equipment were destroyed in hurricane-related flooding**.

||| Your generosity provided **\$80,000** to purchase one of three **box trucks** needed to restore their resale operations.

If you're in the **Asheville area**, keep an eye out for a **Habitat for Humanity box truck** featuring our Deerfield logo—a symbol of the difference your giving makes.

# Delivering More Than Just Food: Meals on Wheels .....

For Deerfield resident volunteers, the hum of a car engine signals more than just an errand—**IT'S A JOURNEY OF KINDNESS AND CONNECTION.**

Through **Meals on Wheels of Asheville & Buncombe County**, older adults like Anne receive **daily hot meals**—but for many, the real gift is the **human connection**.



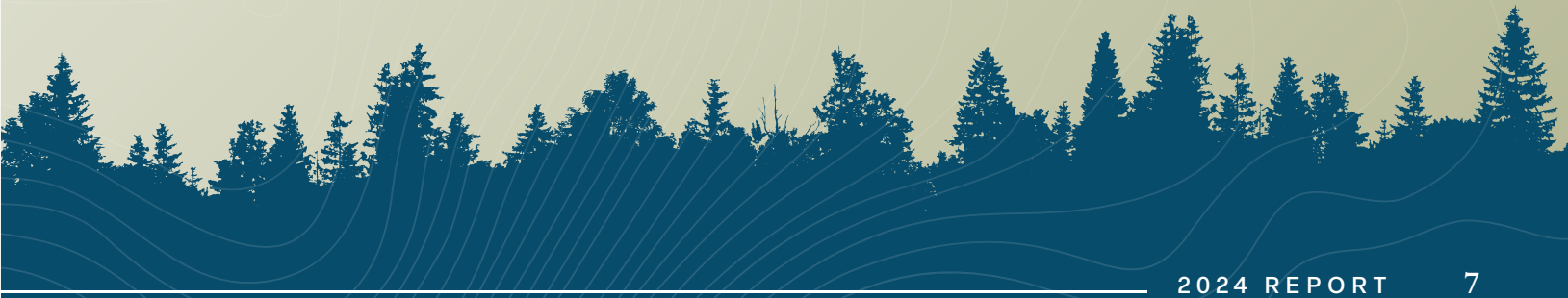
“It wasn’t my idea,” Anne admits with a chuckle. “My granddaughter suggested it because I kept burning myself cooking. Now, **I look forward to seeing a friendly face every day.**”



Funded in part by the **Mission Advancement and Deerfield Cares Funds**, Meals on Wheels ensures that **no senior feels forgotten**.

||| “I just **appreciate the people who come.** They don’t have to do it—but they do.”

*Alan Davis, Deerfield resident and Meals on Wheels volunteer, delivers a meal to Anne. Volunteers pick up shelf stable food donated by Deerfield to Meals on Wheels in the wake of Hurricane Helene.*





# Prioritizing Lifestyle and Well-Being: Health Care Fund .....

At Deerfield, every life story is valued. **The Health Care Fund** ensures that residents receive **compassionate, personalized** care while fostering **deeper connections** between families, caregivers, and the community.

## The “I Am” Project: Honoring Life Stories ≡

**Gyneth Schenck** lived a vibrant life filled with French culture, poetry, and travel. Her daughters, Celeste and Stephanie, helped create her **“I Am” Project board**—preserving memories of her love for classical music, gardening, and her dog, Skippy.

**“We would love for Mom to be a ‘poster girl’ and share this project with the community!”** they said. **“It honored her and helped others see the amazing person she was.”**

For caregivers, the board offered a window into **who Gyneth was beyond her care needs**, creating opportunities for more meaningful interactions.

— **PAIGE BISHOP, BSW, SHARED:**

*“Families love these boards as **sweet memories** of their loved ones. Staff have said it’s wonderful to see residents in a different light—especially those with dementia. **It creates meaningful connections.**”*

Through the **Health Care Fund**, more than **a dozen Deerfield families** have participated in the **“I Am” Project**, celebrating their loved ones in ways that transcend memory loss.

## Expanding Our Impact Through Innovation ≡

With over \$60,000 spent on new projects and initiatives, your support of the **Health Care Fund** also made it possible to:

- Provide **small-group dementia training** with expert **Mary Donnelly**
- **Introduce Sound Blanket technology**, which promotes sleep, reduces falls, and enhances cognitive clarity
- **Engage The Green House Project**, bringing in experts to **reimagine person-centered care** for our health center

By funding programs that **celebrate life, preserve dignity, and foster deeper connections**, your generosity ensures that every resident’s story is honored, no matter where they are on their journey.



# Investing in Our Team: Danny Boone Employee Scholarship Fund .....



When **Erianna Keyse** joined Deerfield’s Dining Department in 2023, she had no idea she’d **fall in love with baking**. Encouraged by her coworkers and supported by the **Danny Boone Employee Scholarship Fund**, she pursued her passion, enrolling in baking school.

**“I started helping Zoe in the bakery because it looked like fun,”** Erianna recalls. **“Then my boss Matt kept encouraging me to go to college. When I heard about the scholarship, I thought, ‘Why not?’ I applied, and now I’m in baking school, and I absolutely love it!”**

One of her proudest moments was creating a **wedding cake for Deerfield residents Judy Domer and Bill Metts**. **“It was a little stressful, but seeing their reaction made it all worth it. It showed me I’m capable of so much. I’m excited to keep growing and sharing what I’ve learned.”**

In 2024, **seven employees** received scholarships totaling **\$21,750**, supporting their education and career advancement.

By investing in staff, **Deerfield fosters growth, innovation, and long-term commitment**, making it an **Employer of Choice** where team members **feel valued, supported, and encouraged to pursue their dreams**.



# Care in the Midst of Crisis: Shirley Burnette Employee Support Fund .....

For **Renee Gossett**, a **social worker in Skilled Care**, life changed instantly when Hurricane Helene devastated her home. Three massive trees crashed through her roof, leaving her overwhelmed and unsure what to do next.

“On my first day back, a coworker encouraged me to ask for help,” Renee recalls. “I sat down with Michelle Wooley and described my situation. She listened and simply asked, ‘What about a dumpster?’ Less than 24 hours later, it arrived, and volunteers from Baptist on Mission were tearing out wet drywall. I finally saw light at the end of the tunnel.”



In 2024, the **Shirley Burnette Employee Support Fund** provided over **\$112,000 in aid**, helping **28 employees recover from hurricane damage** and **17 others facing crises such as medical emergencies and unexpected losses**.

QUOTES FROM EMPLOYEES WHO RECEIVED SUPPORT: —  
“Without this assistance, I don’t know where we’d be.”  
“Deerfield stepped in like family. I’ve never felt so supported at work.”

Through your generosity, **we care for those who care for us**, ensuring every Deerfield team member feels **the strength of this community behind them**—especially in times of crisis.

# Honoring Service, Strengthening Community .....

## Salute2U: Recognizing Our First Responders

On **September 12, 2024**, despite the rain, **residents and staff lined Deerfield’s streets**, waving banners and signs to show appreciation for our **local first responders**.

As part of the **Salute2U Drive-Thru Parade**, **76 police officers, firefighters, and EMS personnel** drove through our campus, receiving **gift-filled lunch bags** and heartfelt thanks.



QUOTES OF APPRECIATION FROM THE EVENT: —  
“This is the nicest thing anyone has done for us in my 30 years with the fire department.”  
“My kids loved seeing the appreciation—it made their day!”  
“I have a family member who works for you and raves about this community. Now I see why.”

Our first responders work tirelessly to keep our community safe. **This was our moment to give back and remind them just how valued they are.**



# Volunteer Engagement: Growing Together Through Service .....

At Deerfield, **volunteering isn't just something we do—it's who we are.**

Let's take a closer look at how YOU "Grew Your Impact" across WNC in 2024:

- **Collective Impact:** Deerfield residents dedicated a remarkable **20,283 hours** to volunteerism—equivalent to over **845 full days of service** in a single year.
- **Individual Commitment:** With **102 residents volunteering**, the average contribution per resident was **199 hours**, demonstrating a deep commitment to service.
- **Widespread Outreach:** Residents partnered with **68 external organizations**, extending their impact beyond Deerfield and enriching the broader WNC community.
- **Time Well Spent:** If valued at the **national average volunteer rate of \$31.80 per hour**, Deerfield residents' contributions equate to more than **\$645,000 in service to the community.**
- **Daily Dedication:** On average, Deerfield volunteers contributed over **55 hours per day, every day of the year**, toward meaningful causes.

From delivering meals to **creating lasting change**, Deerfield volunteers continue to **plant the seeds of service** that will grow for generations to come.



# Legacy Society: Honoring Our History, Investing in Our Future .....

Each year, we celebrate the generosity of **Deerfield Legacy Society** members—those who have included Deerfield in their estate plans, ensuring that future generations benefit from the community they helped build.

Due to the hurricane, our **Annual Deerfield Legacy Society Appreciation Gala**, originally scheduled for **October 13, 2024**, was postponed to **January 26, 2025**. At this special gathering, we were honored to welcome Dini Pickering as our guest speaker.

Dini, **the great-granddaughter of George W. Vanderbilt**, shared insights on preserving the **Biltmore Estate's legacy**, drawing meaningful comparisons to **Deerfield's 70-year history**. Her message inspired guests to reflect on the lasting impact of their own contributions and how they shape **the future of our community**.

If you are interested in becoming part of this special group, contact the **Deerfield Charitable Foundation** to learn more.





# Deerfield Charitable Foundation Funds .....

Audited fund balances for fiscal year ending 9/30/24.

Please note that these balances do not reflect the amazing generosity of the last three months of 2024 — much of which is highlighted within this report.

## Mission Advancement Fund - \$9,743,000

When you give to the Mission Advancement Fund (Unrestricted Gifts), you are supporting Deerfield as it addresses areas of greatest need in the Deerfield community and in the community at large. These gifts support our mission to be a leader in the field of aging services.

## Residents Assistance Fund - \$4,401,00

Your support for the Residents Assistance Fund helps residents who outlive their resources and has provided limited entrance fee assistance. Growing this fund to expand the number of residents receiving assistance will provide important support for Deerfield’s Strategic Pillars, particularly the pillar entitled Financially Strong.

## Danny Boone Employee Scholarship Fund - \$268,000

Your support for employees can be lifechanging when you give to the Danny Boone Employee Scholarship Fund which offers scholarships for employees to further their education in accredited programs, with the intent of providing a path to career growth. In addition, the Danny Boone Employee Scholarship Endowment was created to provide support for this cause in perpetuity.

## Healthcare Fund - \$180,000

Your gifts to the Healthcare Fund support the health and wellbeing of Deerfield residents throughout the continuum of care. This includes memory care, innovations and technology in health services, and enhancements to our healthcare environment.

## Shirley Burnette Employee Support Fund - \$62,000

You provide for the practical needs of employees in crisis with a gift to the Shirley Burnette Employee Support Fund. Named for our beloved, long-term Director of Human Resources, the fund provides financial assistance to employees experiencing emergencies and other situations causing hardship.

## Deerfield Cares Fund - \$5,000

Giving to the Deerfield Cares Fund allows Deerfield to continue its commitment to providing resources to the people of Western North Carolina, placing the organization in a true leadership role among aging service providers. Your gifts to this fund will address the barriers to healthy aging as identified by the Community Engagement Needs Assessment.

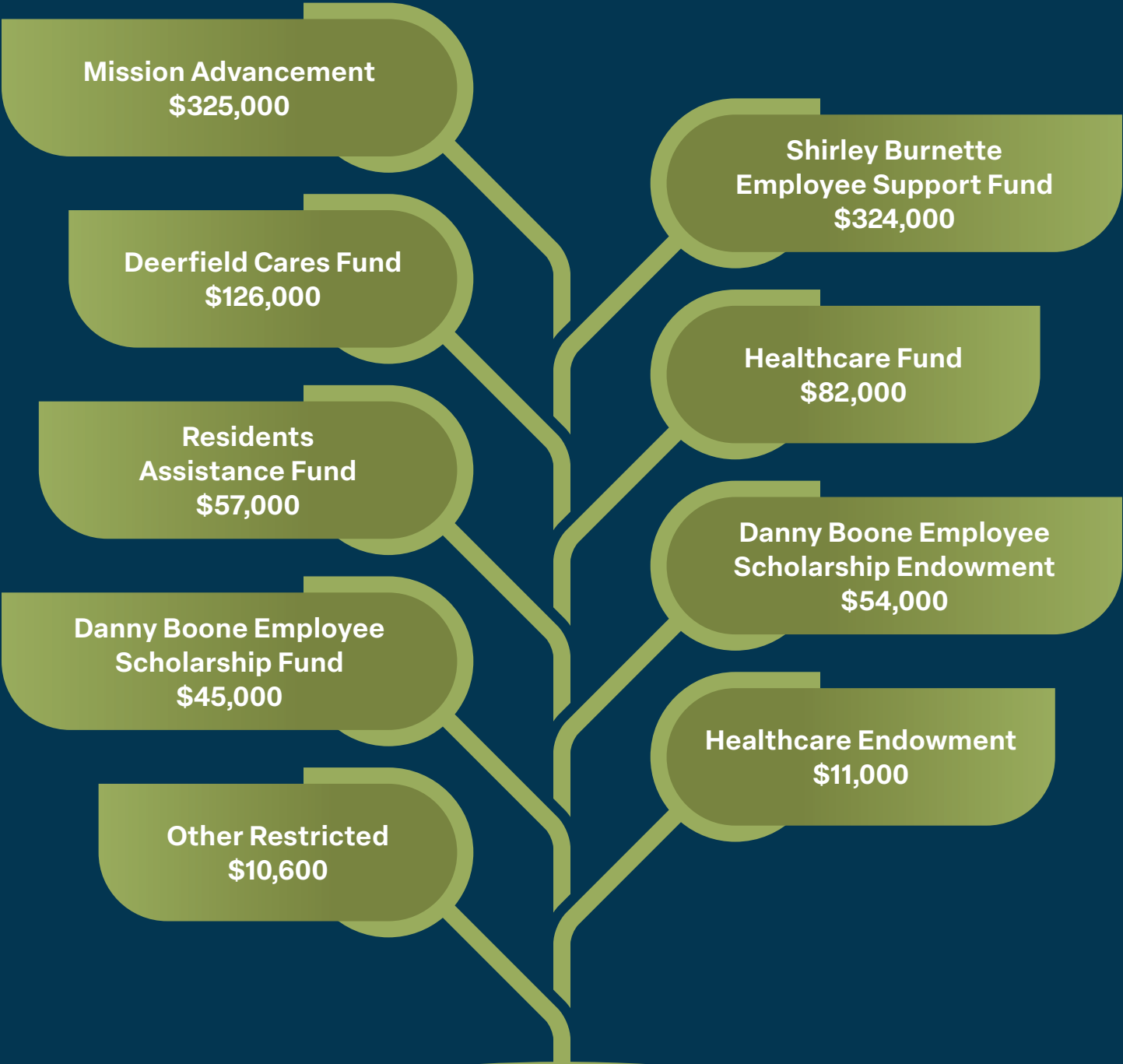
## Endowments

The listed endowments were established by generous donors in order to support Deerfield’s people, programs, and places in perpetuity.

Endowment balances for fiscal year ending 9/30/24	
Brannon Wellness Endowment	\$72,000
Danny Boone Scholarship Endowment	\$583,000
Deerfield Endowment	\$600,000
Landscaping Endowment	\$210,000
McConnell Healthcare Endowment	\$445,000
TOTAL:	\$1,910,000

The fund and endowment balances reflect unrealized gains and losses.

# 2024 DONATIONS - \$1,034,600



Your generosity to Deerfield Charitable Foundation in calendar year 2024 made so much possible. On the next few pages, you will see the names of all who chose to support our work with compassionate generosity.



2024 Giving Report

The following donors have generously supported the mission of Deerfield.

RESIDENT ASSISTANCE FUND

GIFTS IN HONOR OF

Nancy Clark  
William Robertson  
GIFTS IN MEMORY OF  
Mike Anderberg  
Luther Barnhardt  
Orren Beaty  
Janice Bodenhurst  
Capt. Walton Boyer  
Margaret Chandler  
Josephine Chromy  
Robert Clark  
Charles Clogston  
Spencer Coffey  
Doris Daniels  
Madeline Davis  
Nancy Dill  
William “Bill” Falender  
Eloise Greenwood  
Fred Guggenheim  
Ray Haley  
Frances Howell  
Bill Hoyt  
Sara Hoyt  
Tom Hughes  
Ellen Hull  
Janet Ives  
Jean Johnson  
Marion Mayfield-Johnson  
Gwin Jones  
Charles Kilgore  
Robert “Bob” Kimbrough  
Ed Loewe  
Sandra Macklem  
Elizabeth “Betsy” MacManus  
Bruce Martin  
Dianne Mastandrea  
Emery McDonough  
Mary Metts  
Shirley Rapoport  
Thomas Rardin  
Meredith Reinhold  
Judy Rex  
William “Bill” Rex

Bill Robertson  
Ginny Robertson  
Betty Robinson  
Robert “Bobby” Robinson  
Gyneth Schenck  
Millie Schumpert  
Diane Scott  
Barbara Shannon  
Mary Ellen Sheridan  
Elizabeth Sims  
Joan Sitton  
Don Sproule  
Syd Stern  
Carl Titgemeier  
Mimi Tittle  
Timothy Trively  
John Vanderstar  
Bill Winters  
Doug Young  
DONORS  
Roy and Nancy Adams  
Mr. and Mrs. George Ahrens  
Mr. G. Martin Anderson  
and Dr. Sandra J. Anderson  
Mrs. Nancy Bracken  
Ms. Marion Bradfield  
Don and Joanne Brannon  
Reverend Annie Bryant  
Mrs. Kay Cannon  
Walter and Elizabeth Cantrell  
Mr. Robert Chapin  
Amy and Mike Clarke  
Rev. Jonathan Coffey  
George and Pat Collett  
Dr. and Mrs. John Crawford, III  
Mrs. Kathryn Daughton  
Mrs. Suzanne Nesbitt Dawkins  
Carol Falender  
Mrs. Emi Flynn  
Mr. Harold Gollberg  
Robert and Elaine Greene  
Mike and Karen Hamsho  
Judy and Jim Havard  
Elizabeth Wolfe Hughes  
Larry Hull

Rev. Albert A. and  
Rev. Gay Clark Jennings  
Dr. Jennifer Jones  
Mr. Keith Keener  
Dr. Phyllis Lang  
Mr. and Mrs. Howard Latty  
The Rev. Robert Libbey and  
The Rev. Elizabeth Libbey  
Carol and Pedro Martinez  
Glenn and Betsy Mayes  
Bill and Alison McNutt  
Art and Cathy Meyer  
Tom and Margaret Meys  
Lisa and Peter Moffa  
Mr. Joseph Moran  
Mrs. Barbara Newton  
Pardee Neurology Associates  
Mrs. Jane Parmley  
Tom Rightmyer and Lucy Oliver  
Ed and Pat Roberts  
Edward Roberts and Beverley Means  
James Rowan III and Regina George  
Ms. Sue Samson  
Richard and Mary Schumacher  
Diane Scott  
Mel and Sandra Skiles  
Michael and Ginny Sledge  
The Reverend Jane Smith  
Barry and Diane Smith  
Bunk and Nancy Spann  
Bruce and Janice Thorsen  
Mrs. Joan Ussery  
Mrs. Betty Walker  
Mrs. Bonnie Welden  
Mr. and Mrs. Robert F. Wernet, Jr.  
Ann Whaley  
Rita Winters  
Mike and Claudette Wren  
Mike and Ann Young  
Mrs. Molly Young

BRING LOVE TO TABLES

GIFTS IN MEMORY OF

Judy Rex  
William “Bill” Rex  
DONORS  
Anonymous  
Mike and Lorna Anderberg  
Iain and Ann Baird  
Mrs. Louise Beck  
Mr. and Mrs. Cleveland Brown  
Mrs. Kay Cannon  
Walter and Elizabeth Cantrell  
Rusty and Christine Capers  
Mr. and Mrs. Joseph F. Cummings, Jr.  
Kathryn Williams and Alan Davis  
Bill and Judy Durant  
Karen and Dave Eckhardt  
Carol Falender  
Hayes and Anita Fletcher  
Vic and Mimi Galef  
John Gibbons and Clara DaSilva  
Aubrey and Susan Harris  
Ms. Patricia High  
Bob and Linda Hollis  
Jean Jakubowski  
Chuck and Janet Johnson  
Lynda Kepler  
Dennis and Carol Leach  
Wayne and Yvonne Mabey  
Mrs. Ellen McCotter  
Ms. Carol Perine  
Al and Karen Roberts  
Mel and Sandra Skiles  
The Reverend Jane Smith  
Mrs. Ruth Strickland  
Mrs. Melinda Tempe  
Ann Whaley  
Mrs. Molly Young

DANNY BOONE EMPLOYEE SCHOLARSHIP FUND

GIFTS IN MEMORY OF

Betty Ennett  
William “Bill” Falender  
John Hickman  
Katharine Hilton  
Sandra Macklem  
John McCarthy, III  
Meredith Reinhold  
Elizabeth Sims

Doug Young  
DONORS  
Mr. and Mrs. George Ahrens  
Mr. Robert Brunk  
Walter and Elizabeth Cantrell  
Mr. Nick Chubb  
George and Pat Collett  
Dr. and Mrs. John Crawford, III  
Tom and Martha Ann Daily  
Warren and Diane Edwards  
Carol Falender  
Ms. Susan Fisher  
Mr. Edward Fleming  
Hayes and Anita Fletcher  
Dan Gaines  
Vic and Mimi Galef  
Jim and Claire Graves  
Ms. Virginia Graybiel  
Mike and Karen Hamsho  
Aubrey and Susan Harris  
Dr. Phyllis Hatch  
Marjorie H. Hickman  
The Family of Kash Hilton  
Bill and Marilyn Hubbard  
Mr. James Jarratt  
Dick and Sue Johannes  
Lynda Kepler  
Sydney Kloos  
Alice Krutulis  
Kate and John Lafrance  
Bill and Sue Macy  
Carol and Pedro Martinez  
The Reverend Nancy McCarthy  
Bill Metts  
Ed and Pat Roberts  
The Reverend Jane Smith  
Bunk and Nancy Spann  
Mrs. Molly Young

DANNY BOONE SCHOLARSHIP ENDOWMENT

GIFTS IN HONOR OF

AARP Tax Aide Team  
The wedding of Judy Domer  
and Bill Metts  
GIFTS IN MEMORY OF  
Capt. Walton Boyer  
Josephine Chromy  
Doris Daniels  
Cleone Elrod

William “Bill” Falender  
Frances Howell  
Bill Hoyt  
Marion Mayfield-Johnson  
Mary Metts  
Bill Robertson  
Franklin Sanders  
Millie Schumpert  
Diane Scott  
Mary Ellen Sheridan  
Mary Pat Thompson  
Bill Winters  
DONORS  
Elizabeth Culbreth  
Estate of Eloise Greenwood  
Bill and Marilyn Hubbard  
Sylvie Martin  
Ms. Mary Lou Mayer  
Ladene and Russell Newton  
Joe and Judy Pawlick  
Penelope Ponder  
Bill and Karen Pott  
Jane Sanders  
Diane Scott  
Mrs. Melinda Tempe  
Mrs. Molly Young

DEERFIELD CARES FUND

GIFTS IN HONOR OF

Margot Coleman  
Ramsay and Jessica Payton  
Wyn and Tarry Payton  
AARP Tax Aide Team  
GIFTS IN MEMORY OF  
Janice Bodenhurst  
William “Bill” Falender  
Jean Johnson  
Sandra Macklem

DONORS

Anonymous (2)  
Ms. Sheri Almloff  
Rick and Elaine Bagley  
Iain and Ann Baird  
Glenn and Dawn Bartholic  
Gretchen Batra  
Mrs. Nancy Bracken  
The Reverend Elizabeth Canham  
Gene and Sallie Carr  
Mrs. Jill Cochrane  
Barbara Colon



# 2024 Giving Report Continued .....

The following donors have generously supported the mission of Deerfield.

### DEERFIELD CARES FUND CONT'D

Mr. Gerald DeLand  
John and Joan Dickson  
The Rev. and Mrs. David Fargo  
Ms. Susan Fisher  
Hayes and Anita Fletcher  
Kerry and Sandy Grant  
Mike and Karen Hamsho  
Mr. Ken Hassell  
Mrs. Virginia Hogg  
Bill and Marilyn Hubbard  
Bill Jacobs and Susan Posey  
Dick and Sue Johannes  
Mrs. Jane Knight  
Keith W Kriebel and Linda A Wells  
Mr. Don Kunard  
Mrs. Lib Lamb  
Mr. Jack Lockett  
Wayne and Yvonne Mabey  
Bill and Sue Macy  
Mrs. Carolyn Marlowe  
Mrs. Nancy Martin  
Sylvie Martin  
Carol and Pedro Martinez  
The Reverend Nancy McCarthy  
Mrs. Ellen McCotter  
Mary P. Merrill and David W. Tarr  
Mrs. Ann Moorefield  
Ms. Susannah O'Donnell  
Ms. Henrietta Ouzts  
Ms. Joan Payton  
Mrs. Betty Pond  
Helen Porter Foundation  
David and Lynn Ramsey  
Rotary Club of Asheville-Biltmore Foundation  
Ms. Sue Samson  
Robert and Jeanette Schmitt  
Mr. William Seidman  
Bob and Marian Sigmon  
Mel and Sandra Skiles  
Mr. Wayne Steinmetz  
Marty and Joanne Swenson  
Ann Whaley  
Rita Winters  
Ms. Alice Youmans  
Mrs. Molly Young

### DEERFIELD CARES SCHOOL SUPPLIES DRIVE

#### DONORS

Mike and Lorna Anderberg  
Iain and Ann Baird  
Gretchen Batra  
Mrs. Nancy Bracken  
Don and Joanne Brannon  
John and Marlene Buckles  
Mrs. Kay Cannon  
Mrs. Judith Carrigan  
Amy and Mike Clarke  
Bill and Meg Clontz  
Mr. and Mrs. James Clow  
Barbara Colon  
Mrs. Rosemary Crow  
Mr. and Mrs. Joseph F. Cummings, Jr.  
Frank Cummings & Karen Kellow  
Mrs. Kathryn Daughton  
Kathryn Williams and Alan Davis  
Mr. Gerald DeLand  
Judy Domer  
Bob and Eugenia Dowdeswell  
Karen & Dave Eckhardt  
Warren and Diane Edwards  
Ms. Susan Fisher  
Mrs. Heather Fletcher  
Hayes and Anita Fletcher  
Dave and Liz Galentine  
John Gibbons and Clara DaSilva  
Dr. and Mrs. James H. Godfrey  
John and Barbara Gregg  
Dale and Rose Haning  
Mr. Ken Hassell  
Dan and Linda Hinchliffe  
Mrs. Kathleen Holmes  
Mr. Jerry Jacobson  
and Ms. Patricia Minard  
Dick and Sue Johannes  
George and Suzy Johnson  
Mrs. Jane Knight  
Mr. and Mrs. Howard Latty  
Dennis and Carol Leach  
Mr. Kerry Levin  
Donna Ross and Frank Lockwood  
Mrs. Nancy Martin  
Sylvie Martin

Ms. Mary Lou Mayer  
The Reverend Nancy McCarthy  
Mrs. Ellen McCotter  
Bill Metts  
Tom and Margaret Meys  
Ms. Carol Perine  
Mrs. Rosemary Plane  
Perrin and Laurel Radley  
David and Lynn Ramsey  
Ed and Pat Roberts  
James Rowan III and Regina George  
Mary and Peter Saladino  
Bob and Marian Sigmon  
Mel and Sandra Skiles  
Mr. and Mrs. LaVoy Spooner  
Marty and Joanne Swenson  
Mrs. Melinda Tempe  
Buck and Margaret Walters  
Mr. and Mrs. Will Wardowski  
Mr. and Mrs. Ben Watson  
Rebecca Welch  
Ann Whaley  
Don and Irene York

### HEALTHCARE FUND

#### GIFTS IN MEMORY OF

Fred Guggenheim  
Ellen Hull  
Robert “Bob” Kimbrough  
Elizabeth Klein  
Robert “Bobby” Robinson  
Elizabeth Sims  
Bill Winters  
**DONORS**  
Mr. and Mrs. George Ahrens  
Charles and Kathryn Alvis  
Mike and Lorna Anderberg  
David and Nancy Blevins  
Mrs. Nancy Bracken  
Mr. Robert Brunk  
Walter and Elizabeth Cantrell  
Mrs. Kathryn Daughton  
Tom and Susan Eubanks  
Carol Falender  
Ms. Susan Fisher  
Mr. Edward Fleming  
Vic and Mimi Galef

Jim and Claire Graves  
Mike and Karen Hamsho  
Larry Hull  
Mr. James Jarratt  
George and Suzy Johnson  
Lynda Kepler  
Mr. Don Kunard  
Kate and John Lafrance  
Mahlon and Jennifer Long  
Bill and Sue Macy  
Mrs. Nancy Martin  
Carol and Pedro Martinez  
Mr. and Mrs. Clarence Patterson  
Ed and Pat Roberts  
Mary and Peter Saladino  
Bob and Marian Sigmon  
Mel and Sandra Skiles  
Mrs. Joan Ussery  
Mrs. Betty Walker  
Rita Winters  
Alan and Kathleen Young  
Mrs. Molly Young

### LIBRARY FUND

#### GIFTS IN MEMORY OF

#### DONORS

Ellen Hull  
Vic and Mimi Galef  
Larry Hull  
Mr. James Jarratt  
Ms. Sue Samson

### MCCONNELL HEALTHCARE ENDOWMENT

Walter S. McConnell Living Trust

### MISSION ADVANCEMENT (UNRESTRICTED)

#### GIFTS IN HONOR OF

Libby Bush  
Anita Cahill  
Deerfield Community and Foundation Board Members  
Deerfield Residents, Staff, and Leadership  
Habitat for Humanity AIP Partnership  
Jill Knight  
Renee and Howard Latty  
Faith Perkins  
Sandra and Mel Skiles  
Bob Wernet  
Michelle Wooley

### GIFTS IN MEMORY OF

Chief James Akano Alowoesein  
Mike Anderberg  
Luther Barnhardt  
Orren Beaty  
Janice Bodenhorst  
Doris Daniels  
William “Bill” Falender  
Fred Guggenheim  
Ray Haley  
Bill Hoyt  
Sara Hoyt  
David Johnson  
Robert “Bob” Kimbrough  
Buzz and Florence Lee  
Ed Loewe  
Sandra Macklem  
John McCarthy, III  
Emery McDonough  
Meredith Reinhold  
Bill Robertson  
Robert “Bobby” Robinson  
Diane Scott  
Elizabeth Sims  
Syd Stern  
Carl Titgemeier  
Mimi Tittle  
Doug Young  
**DONORS**  
Mr. and Mrs. George Ahrens  
Mrs. Maria-Gladys Baillard  
Lloyd Bieber Memorial Fund  
Danny Bernstein  
Stephanie and Gary Book  
The Estate of Capt. Walton Boyer  
Mrs. Nancy Bracken  
Don and Joanne Brannon  
Mr. and Mrs. David Brown  
John and Marlene Buckles  
Jeff and Libby Bush  
Robert and Jo Chandler  
Ted and Susan Coleman  
Jim and Melinda Crawford  
Tom and Martha Ann Daily  
Chris and Paul Dismukes  
The Episcopal Diocese of Western North Carolina  
Thomas and Kay Finger  
Ms. Susan Fisher  
Hayes and Anita Fletcher  
Mr. Charles Fulmer  
Kerry and Sandy Grant

Mr. Craig Green  
Estate of Eloise Greenwood  
Gayle Haglund  
Judy and Jim Havard  
Ms. Lillian D. Headley  
Mrs. Elaine Holland  
Bob and Julie Johnson  
John and Jeanne Kamensky  
Ms. Daisy Karasek  
Mrs. Mary Haden Keenan  
Latty Family Foundation  
LeadingAge NC Foundation  
Dudley Lehman  
Myron and Angela Lepro  
Mr. Kerry Levin  
The Rev. Robert Libbey  
and The Rev. Elizabeth Libbey  
David and Lori McCann  
Dr. Philip F. McKean  
Herb and Linda Mensch  
Charles F. and Janet M. Moore  
George and Judith Morosani  
Morosani Foundation  
Ms. Stephanie Noland  
Ms. Pamela Overby  
Dr. and Mrs. Isaac Owolabi  
Mr. and Mrs. Clarence Patterson  
Mr. and Mrs. Robert Peterson  
Steven and Wanda Phifer  
Ed and Pat Roberts  
Bill and Carolyn Robichaux  
Rotary Club of Asheville-Biltmore Foundation  
Sherrod and Margaret Salsbury Foundation Fund  
Mel and Sandra Skiles  
Bunk and Nancy Spann  
Mrs. Josephine Stead  
Mrs. Jean Suits  
Marty and Joanne Swenson  
Ms. Karen Wallace-Meigs  
Eleanor Waterhouse  
Rebecca Welch



2024 Giving Report Continued .....

The following donors have generously supported the mission of Deerfield.

SHIRLEY BURNETTE  
EMPLOYEE SUPPORT FUND

GIFTS IN HONOR OF  
Ria Aufdermarsh  
Libby Bush  
Lizy Coleman  
Margot Coleman  
Joanne Deeken  
Cheryl and Brian Dehmlow  
Keith Einsmann  
Nancy Fletcher  
Julie Jones  
Timothy Kurtz  
Jeanie Marshall  
Faith Perkins and Family  
The Birthday of Dr. Jim Powell  
Deerfield Employees

GIFTS IN MEMORY OF  
Mike Anderberg  
Carl Aufdermarsh  
Dolores Borreson  
Anna and Vincent Cappelli  
Paul and Evan Coleman  
William “Bill” Falender  
Jackie Hudson  
Tom Hughes  
Ellen Hull  
Charles Kilgore  
Robert “Bob” Kimbrough  
Sandra Macklem  
John McCarthy, III  
Martha and Lee Newman  
Judy Rex  
William “Bill” Rex  
Jenny Robertson  
Mary Ellen Sheridan  
Elizabeth Sims  
Syd Stern  
Mimi Tittle  
John Vanderstar  
Robert Whaley  
Doug Young

DONORS  
Anonymous  
Roy and Nancy Adams  
Dr. Gary and Dr. Ruth Allen  
Ms. Sheri Almloff  
Bill and Leslye Altemeier  
Charles and Kathryn Alvis  
Mike and Lorna Anderberg

Ms. Charing Anthony  
Ms. Sheila Anthony  
Iain and Ann Baird  
Pat and Woody Baker  
Ruth Barnhardt  
Ms. Sharen Bass  
Gretchen Batra  
Mrs. Louise Beck  
Danny Bernstein  
Herman and Lynn Boda  
Stephanie and Gary Book  
Mrs. Nancy Bracken  
Don and Joanne Brannon  
Mr. Thomas Brewer  
Mr. and Mrs. David Brown  
Mr. and Mrs. Cleveland Brown  
Reverend Annie Bryant  
Jeff and Libby Bush  
Mrs. Anita Cahill  
Walter and Elizabeth Cantrell  
Ms. Kristen Carneal  
Ms. Elizabeth Clemens  
Elizabeth Culbreth  
Ms. Carol Culler  
Mr. and Mrs. Joseph F. Cummings, Jr.  
Mr. Sandy Cummings II  
Kathryn Williams and Alan Davis  
Ken and Carol Deal  
Jean and Stephen Deal  
Joanne Deeken  
Mr. Jim Deeken  
Mr. Gerald DeLand  
Chris and Paul Dismukes  
Bob and Eugenia Dowdeswell  
Bill and Judy Durant  
Karen and Dave Eckhardt  
Warren and Diane Edwards  
Ms. Judith Ela  
The Reverend Barbara Eldridge  
Dr. and Mrs. James W. Estes  
Carol Falender  
Ms. Jannet Feldman  
Ms. Susan Fisher  
Mr. Edward Fleming  
Hayes and Anita Fletcher  
John and Barbara Fletcher  
Sandy and Rob Freeman  
Anne and Doug Friedlander  
Ms. Nancy Friedman  
Mike and Vivien Fritz

Dan Gaines  
Vic and Mimi Galef  
Dave and Liz Galentine  
Bryan and Maryanne Giller  
Kerry and Sandy Grant  
Jim and Claire Graves  
John and Barbara Gregg  
Mrs. Margaret Griner  
Mrs. Karen Guderian  
Mr. Theodore Hadjian Jr.  
Mr. Richard Hall  
Ms. Karen Hamilton  
Mike and Karen Hamsho  
Dale and Rose Haning  
Aubrey and Susan Harris  
Mr. Ken Hassell  
Judy and Jim Havard  
Peter Hawes  
Steven Hayasaka and Sandra Whitmore  
James and Marie Hefley  
Bill and Loretta Heiser  
Mr. Joseph Hilyard  
Mr. and Mrs. Albert Hobbs  
Bob and Linda Hollis  
Richard and Sylvie Horvath  
Bill and Marilyn Hubbard  
Mr. Jeff Hudkins  
Mrs. Deborah Hull  
Larry Hull  
Bill Jacobs and Susan Posey  
Mr. Jerry Jacobson  
and Ms. Patricia Minard  
Kennon and Bill Jamieson  
Ms. Beverly Janowski  
Mr. James Jarratt  
Van C. and Margaret M. Joffrion  
Dick and Sue Johannes  
Bob and Julie Johnson  
Chuck and Janet Johnson  
Mrs. Eleanor Johnson  
George and Suzy Johnson  
Emilie Kimbrough  
Sydney Kloos  
Kate and John Lafrance  
Dennis and Carol Leach  
Rev. Alan Leonard  
Mr. Kerry Levin  
David and Jennifer Liles  
Mahlon and Jennifer Long  
Wayne and Yvonne Mabey

Ms. Christy Mabry  
Bob and Gail MacLean  
Bill and Sue Macy  
Ms. Margaret Macy  
Mrs. Carolyn Marlowe  
Carlos and Carol M Martel  
Mrs. Nancy Martin  
Carol and Pedro Martinez  
Mrs. Kathleen McCandless  
The Reverend Nancy McCarthy  
Mr. William McGuffin  
Bill and Alison McNutt  
Mr. and Mrs. Michael McWeeny  
Mary P. Merrill and David W. Tarr  
Ms. Corinne Meys-Cronin  
Lisa and Peter Moffa  
Sue and Charlie Mueller  
Brenda Nash  
Janis Newbery  
Ms. Anne Newman  
Mrs. Barbara Newton  
Amanda and Mary Northup  
Ms. Diana Norton  
Mrs. Susan Oldham  
Ms. Jeanette Oliver  
Mr. Tom Owens  
Mrs. Eileen Pappalardo  
Mrs. Jane Parmley  
Mr. and Mrs. Clarence Patterson  
Faith Perkins  
John and Carol Perkins  
George and Dini Pickering II  
Grace Pless  
Mrs. Betty Pond  
Penelope Ponder  
Ben Powell  
Larry and Mary Jane Price  
Perrin and Laurel Radley  
David and Lynn Ramsey  
Tom Rightmyer and Lucy Oliver  
Edward Roberts and Beverley Means  
Ed and Pat Roberts  
Hughes and Margaret Roberts  
Bill and Carolyn Robichaux  
Terry and Cathy Roche  
James Rowan III and Regina George  
Mary and Peter Saladino  
Ms. Sue Samson  
Jane Sanders  
Robin and Sarah Schilling  
Ms. Estela Schmalz  
Robert and Jeanette Schmitt  
Stephen and Vaughn Schwarz  
Steve and Carol Sedgwick  
Mr. William Seidman  
Bob and Marian Sigmon

Mrs. Mary Simmons  
Mel and Sandra Skiles  
Mrs. Josephine Stead  
Bill and Ramona Strottman  
Ms. Marie Sutton  
Marty and Joanne Swenson  
Mr. and Mrs. Gerald L Talbot Jr.  
Mrs. Melinda Tempe  
Mrs. Mimi Tittle  
Ray and Fran Tock  
Ms. Ann Trousdale  
Thankful Vanderstar  
Adrian Verkouteren  
Charles and Ann vonRosenberg  
Mr. Lance Wallace  
Buck and Margaret Walters  
Mrs. Mariana Warner  
Rebecca Welch  
Ms. Alice Weldon  
Mr. and Mrs. Robert F. Wernet, Jr.  
Ann Whaley  
Ms. Anne P Wheeler  
Ms. Susan White  
Ms. Jeanne Wilkinson  
Ms. Elizabeth Williams  
Ms. Adrienne Willis  
Mrs. Harry Woggon  
Michelle and Ben Wooley  
Don and Kathy York  
Alan and Kathleen Young  
Mrs. Molly Young  
Rotary Club of Asheville-Biltmore  
Foundation  
Top Tier Homes

VISUAL ARTS  
GIFTS IN MEMORY OF  
Syd Stern  
DONORS  
Fiber Arts Alliance  
Andrea Stern  
Mrs. Molly Young

WOODSHOP  
GIFTS IN HONOR OF  
Bill Metts  
Joe Pawlick  
DONORS  
Mr. and Mrs. George Ahrens  
David and Nancy Blevins  
Mr. and Mrs. David Brown  
Reverend Annie Bryant  
Mike and Viv Cavanaugh  
Bill and Meg Clontz  
Jim and Melinda Crawford  
Mrs. Rosemary Crow

Mrs. Kathryn Daughton  
Kathryn Williams and Alan Davis  
Bill and Judy Durant  
Dr. and Mrs. James W. Estes  
Mrs. Emi Flynn  
Dolores and Will Gamble  
Mrs. Margaret Griner  
Ms. Kathleen Handley  
Judy and Jim Havard  
Bill and Loretta Heiser  
Dan and Linda Hinchliffe  
Mrs. Elaine Holland  
Richard and Sylvie Horvath  
Bill and Marilyn Hubbard  
Mr. Jerry Jacobson  
and Ms. Patricia Minard  
Mr. James Jarratt  
Bob and Julie Johnson  
George and Suzy Johnson  
Ms. Jacqueline Kennaugh  
Jesse and Phyllis Key  
Emilie Kimbrough  
Mrs. Jane Knight  
Mr. and Mrs. Howard Latty  
Mr. Kerry Levin  
The Rev. Robert Libbey  
and The Rev. Elizabeth Libbey  
Donna Ross and Frank Lockwood  
Ms. Deb Lombardi  
John and Janet Long  
Mrs. Carolyn Marlowe  
Mrs. Myra Matthews  
The Reverend Nancy McCarthy  
Mrs. Ann Michie  
Sue and Charlie Mueller  
Ms. Joan Payton  
Ms. Carol Perine  
Ms. Elizabeth Gettys Pierce  
Ethel Piper  
Perrin and Laurel Radley  
Ed and Pat Roberts  
Geri Rogers  
Mr. and Mrs. Raymond Savoie  
Stephen and Vaughn Schwarz  
Mrs. Vivian Sitton  
The Reverend Jane Smith  
Bunk and Nancy Spann  
Mrs. Melinda Tempe  
Mrs. Dianne H Turner  
Bruce Vliek  
Ms. Alice Weldon  
Ms. Susan White



## ..... OUR MISSION .....

**Nurturing** Deerfield's spirit of generosity, **enriching** the lives of residents and **sharing** our resources with people across Western North Carolina.

**Scan the QR code below to learn more and donate to growing our impact.**



1617 Hendersonville Road - Asheville, North Carolina 28803  
[www.deerfieldwnc.org/charitable-foundation](http://www.deerfieldwnc.org/charitable-foundation)